

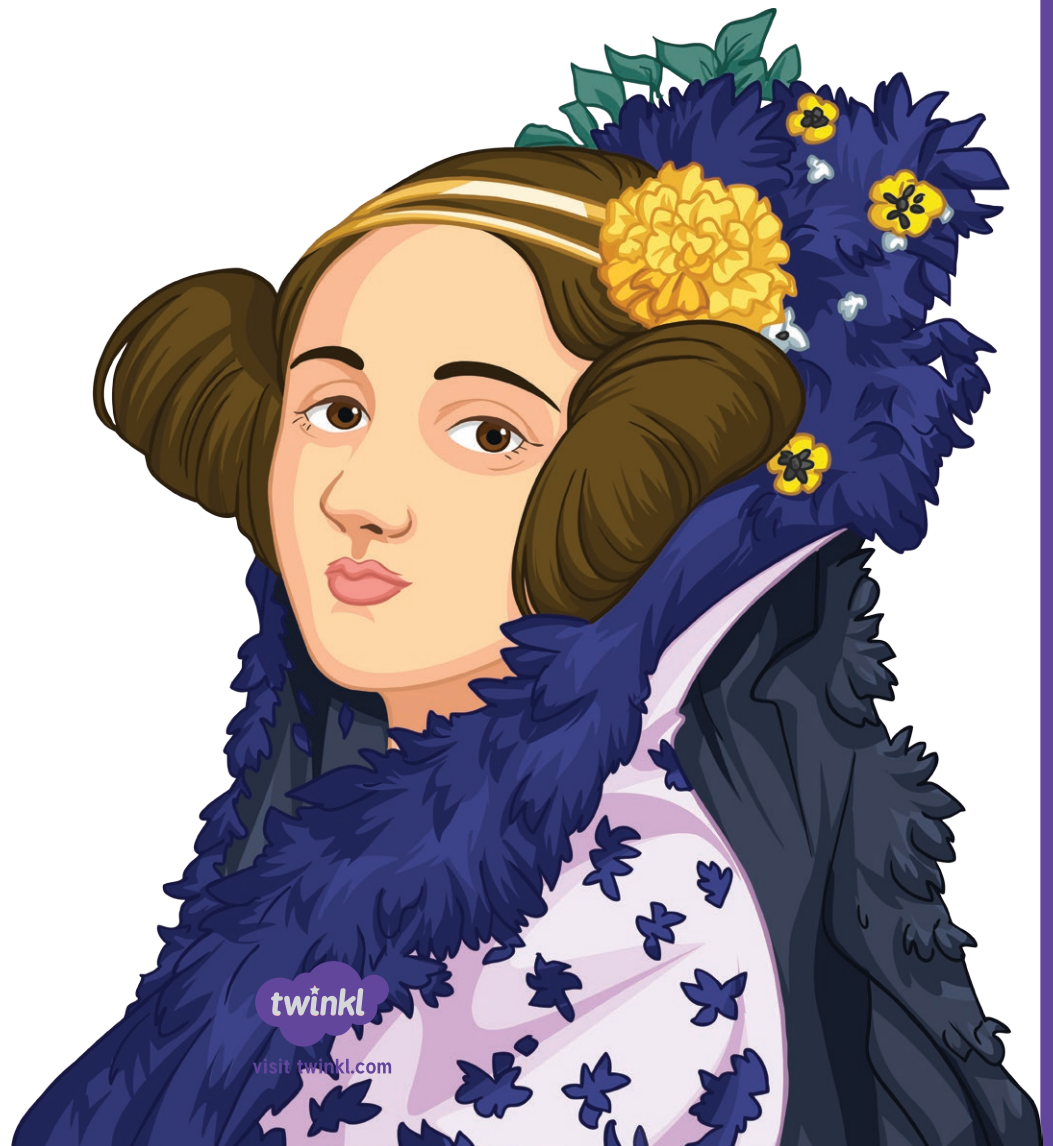
Ada Lovelace-Inspired Puzzles

Ada Lovelace, born Ada Gordon, was the daughter of well-known poet Lord Byron.

She was raised by her mother to embrace mathematics, science and logic and has been called the world's first computer programmer after she wrote a machine algorithm for a machine that was never built.

She recognised that numbers could represent far more than quantities alone.

These logic puzzles are inspired by the work and life of Ada Lovelace. We hope they inspire you too!



twinkl

visit [twinkl.com](https://www.twinkl.com)